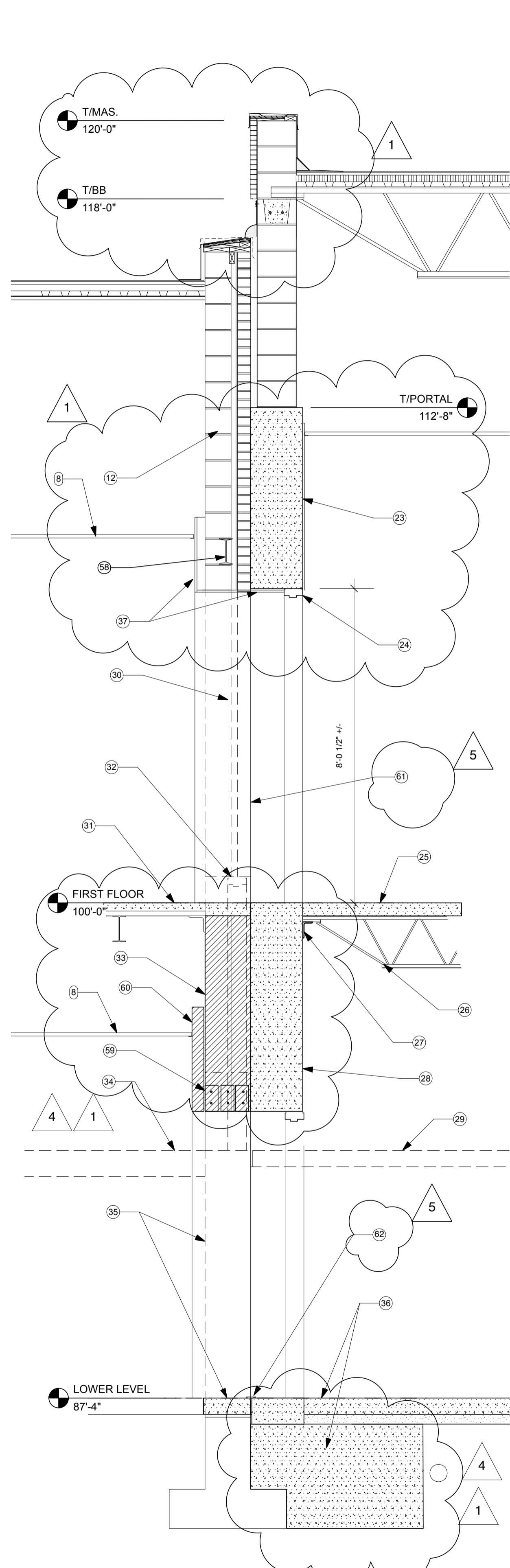
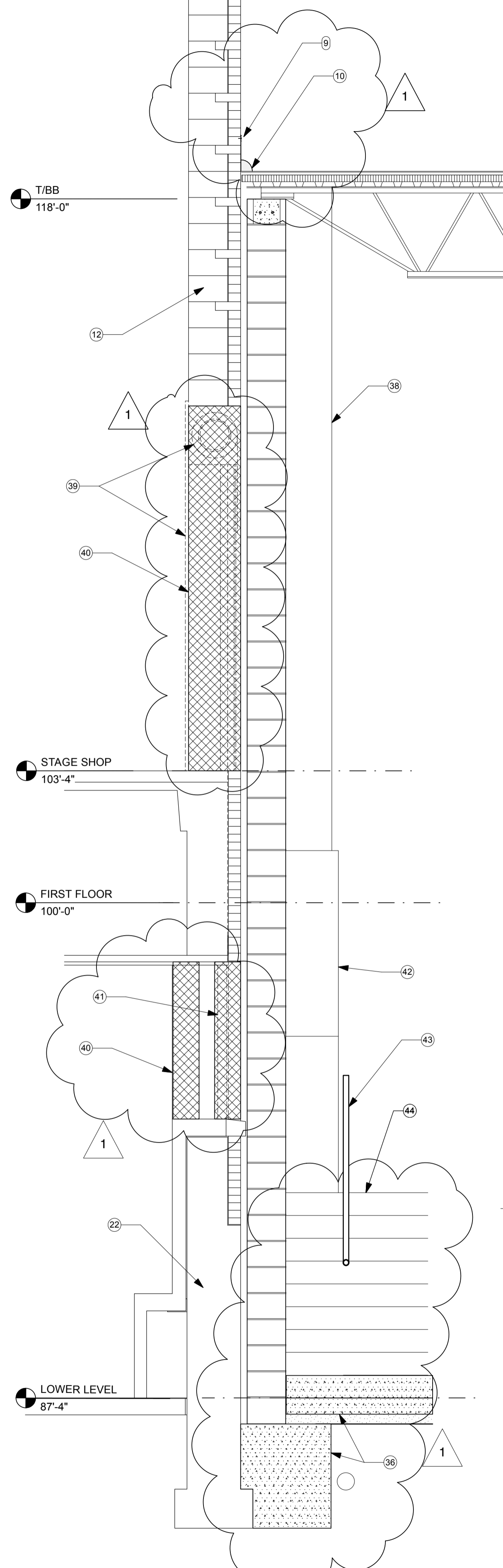


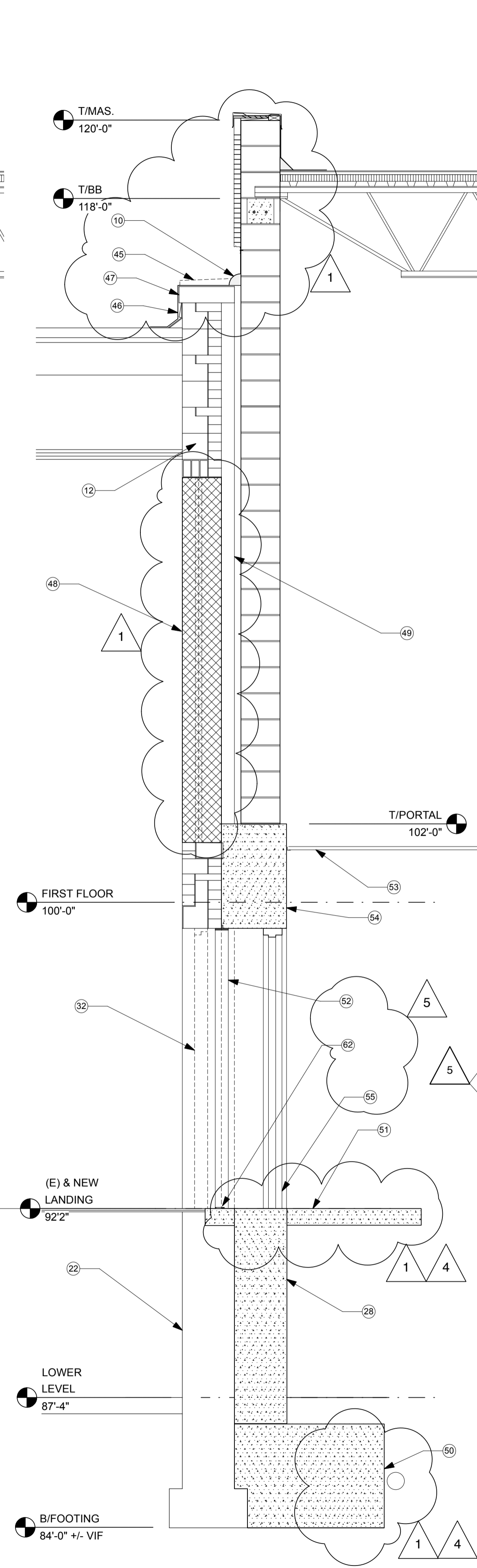
E1 SECTION
A5.2 1/2" = 1'-0"



E2 SECTION (SEE E1/A5.2 FOR TYPICAL NOTES)
A5.2 1/2" = 1'-0"



E3 SECTION
A5.2 1/2" = 1'-0"



E4 SECTION
A5.2 1/2" = 1'-0"

DRAWING KEYNOTES

1. METAL COPING (07710)
2. TYPICAL ROOFING MEMBRANE (07550) OVER CANT STRIP AT WALLS
3. RIGID INSULATION (07550) PROVIDE TAPERED INSULATION AS REQUIRED TO SLOPE ROOF TO DRAIN.
4. METAL DECK (05310) - SEE STRUCTURAL DRAWINGS.
5. BAR JOISTS (05210) - SEE STRUCTURAL DRAWINGS
6. BOND BEAM (04810) - SEE STRUCTURAL DRAWINGS
7. 12" CMU WITH HORIZONTAL JOINT REINFORCING AT 16" OC VERT. (04810)
8. SCHEDULED CEILING (09511)
9. TERMINATION BAR (07530) WITH SEALANT
10. ROOF MEMBRANE (07530) AND EXPANSION JOINT (07710)
11. REMOVE (E) COPING (02060). INSTALL BLOCKING (06100) AS REQUIRED TO INSTALL NEW ROOFING FLASHING AND MEMBRANE (07530)
12. EXISTING WALL AND ROOF CONSTRUCTION
13. 5" CONCRETE SLAB (03300) ON GRADE - SEE STRUCTURAL DRAWINGS.
14. CONCRETE FOUNDATION WALL (03300) - SEE STRUCTURAL DRAWINGS.
15. BENTONITE WATERPROOFING WITH PROTECTION BOARD (07170)
16. GRANULAR FILL - #57 GRAVEL COMPACTED (03300)
17. CONTROLLED DENSITY FILL
18. APPROXIMATE EXISTING GRADE - FIELD VERIFY
19. EXISTING SOIL
20. 5" FOOTING DRAIN (02620)
21. NEW FOOTING (03300) - SEE STRUCTURAL DRAWINGS
22. EXISTING FOUNDATION AND FOOTING
23. TILE FACING (09300) ON PORTAL. EXTEND ABOVE CEILING.
24. DOOR AND FRAME (08110)
25. CONCRETE SLAB (03300) ON METAL DECK (05310) - SEE STRUCTURAL DRAWINGS.
26. BAR JOISTS (05210) - SEE STRUCTURAL DRAWINGS.
27. BEARING ANGLE (05120) - SEE STRUCTURAL DRAWINGS.
28. 16" THICK CONCRETE "PORTAL" - SEE STRUCTURAL DRAWINGS. INSTALL BOND BREAKER (03300) BETWEEN PORTAL AND EXISTING WALL
29. REMOVE EXTERIOR CONCRETE SLAB (02060)
30. REMOVE EXISTING MASONRY AS REQUIRED FOR NEW OPENING (02060)
31. NEW STEEL DECK (05310) AND CONCRETE FLOOR (03300) ON STEEL FRAMING (05120) - IN-FILL AT EXISTING STAIRS - SEE STRUCTURAL DRAWINGS.
32. REMOVE EXISTING DOOR AND FRAME (02060)
33. NEW MASONRY IN-FILL (04810)
34. REMOVE LANDING AND STAIRS (02060)
35. SAWCUT AND REMOVE EXISTING FOUNDATION WALL AS REQUIRED TO INSTALL NEW OPENING. REMOVE WALL TO BELOW NEW FLOOR SLAB (02060)
36. NEW FLOOR SLAB AND FOOTING (03300) - SEE STRUCTURAL DRAWINGS.
37. NEW 5/8" GWB ON 2 1/2" METAL STUDS OVER EXISTING WALL (09260) AND RETURNED TO DOOR FRAME. USE 3/4" METAL FURRING ON RETURN TO DOOR FRAME.
38. 12" CMU WALL BEYOND (04810)
39. REMOVE EXISTING SHUTTER, FRAME, HARDWARE, ETC. (02060)
40. INSTALL TWO WYTHES OF 8" CMU IN OPENING, FLUSH WITH INTERIOR AND EXTERIOR FACES OF WALL (04810).
41. REMOVE EXISTING GLASS BLOCK (02060)
42. CONCRETE PORTAL BEYOND
43. HANDRAIL (05520)
44. STAIRS BEYOND
45. REMOVE EXISTING METAL COPING (02060)
46. NEW EPDM FLASHING (07530)
47. INSTALL SLIP SHEET OVER EXISTING STONE COPING (06100)
48. INSTALL 12" CMU IN OPENING, COORDINATE WITH EXISTING INTERIOR MASONRY (04810)
49. LINE OF EXISTING PILASTER BEYOND
50. PORTAL FOUNDATION AND FOOTING (03300) - SEE STRUCTURAL DRAWINGS
51. NEW STAIR LANDING (03300)
52. EXPANSION JOINT COVER AT JAMBS AND HEAD OF OPENING (05810) EQUAL TO BALCO INC MODEL #WD-1. TYPICAL AT BOTH DOORS.
53. STAIR CEILING (09511)
54. TYPICAL CONCRETE "PORTAL" FORMED TIGHT TO EXISTING WALL PROFILE. MIN. THICKNESS 16" - SEE STRUCTURAL DRAWINGS. INSTALL 30# FELT BOND BREAKER BETWEEN PORTAL AND EXISTING WALL (03300)
55. NEW DOOR AND FRAME (08110) - SEE DOOR SCHEDULE
56. 2" EIFS (07240) OVER CMU. INSTALL DRIP AT BOTTOM
57. INSTALL 3/4" FRP PLYWOOD AND 1 1/2" BLOCKING AT TOP OF WALL. EXTEND 3/4" PLYWOOD OVER TOP OF EIFS.
58. NEW LINTEL TO SUPPORT EXISTING WALL - SEE STRUCTURAL DWGS.
59. NEW LINTEL FOR IN-FILL MASONRY (05500) - SEE STRUCTURAL DWGS
60. 4" CMU AT JAMBS & HEAD - RETURN TO SIDEWALLS (04810). PROVIDE 4X8 PRECAST LINTEL AT HEAD OF OPENING.
61. GWB CONTROL JOINT WITH SEALANT
62. TILE STRIP EQUAL TO ROPPE # 159 TRANSITION STRIP (09650).